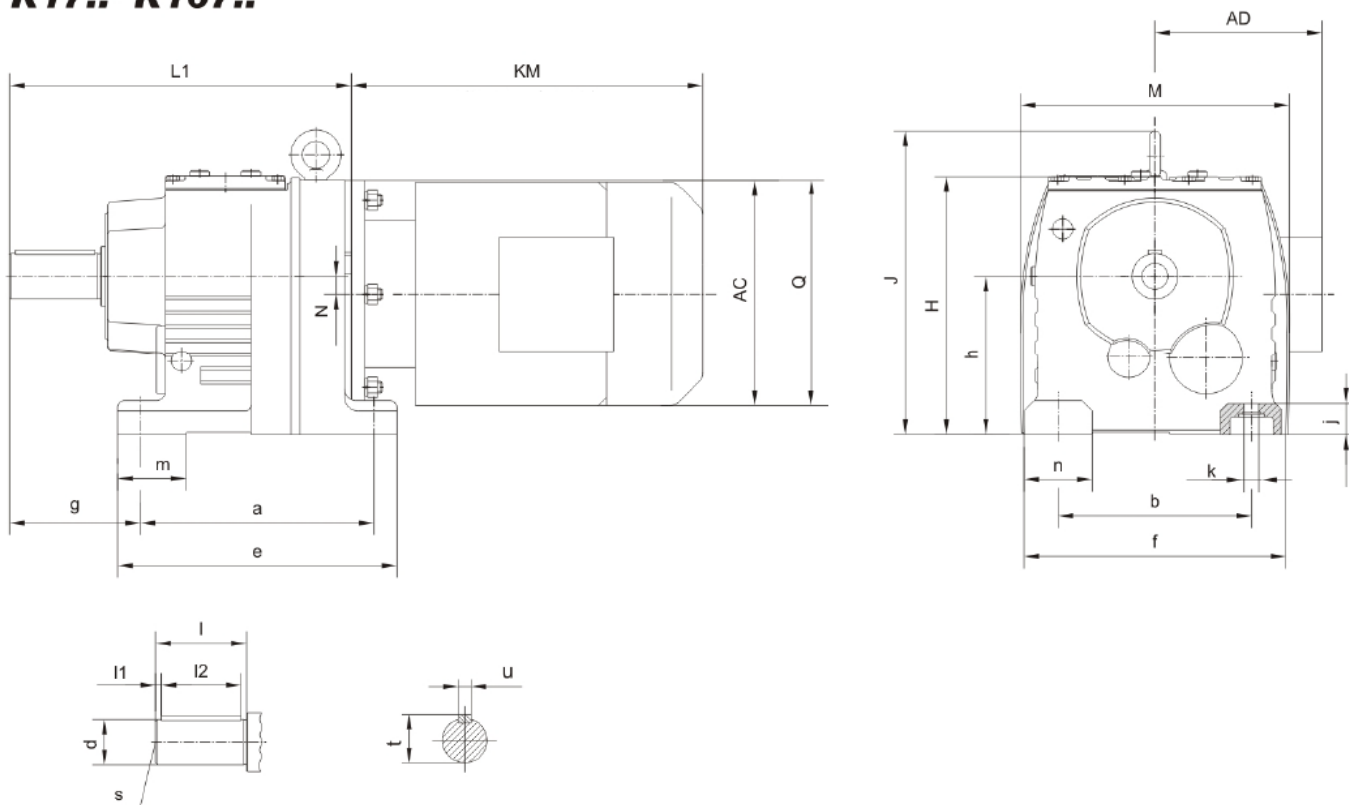
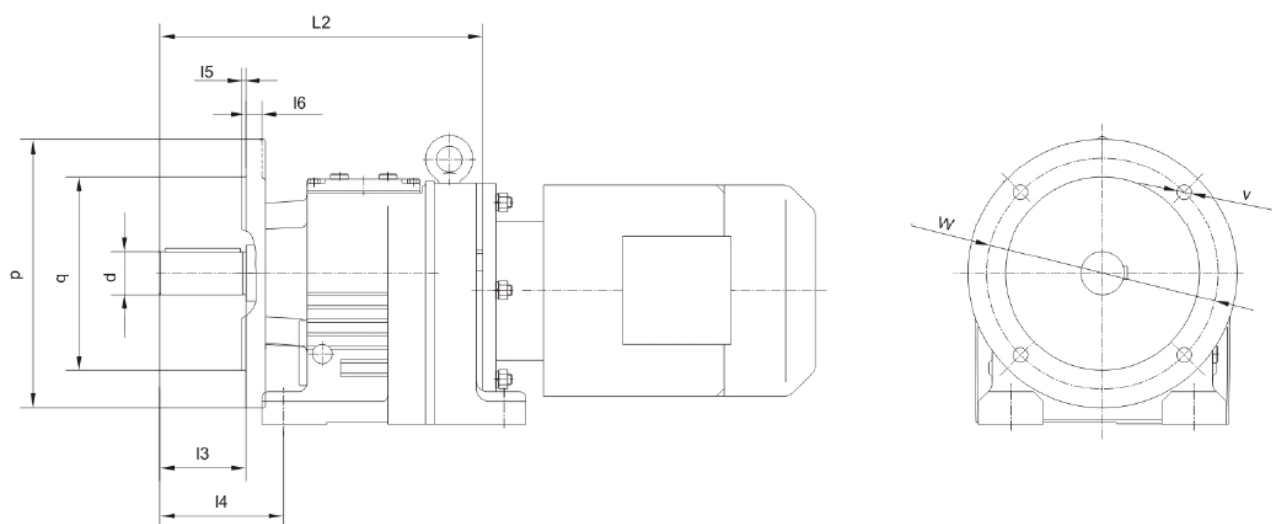


Габаритные размеры.

R17..~R167..



R17F..~R87F..



Цилиндрические соосные мотор-редукторы серии R



size	a b	e f	g	h	j	k	m n	Shaft dimension				
								d	l	l ₁ l ₂	s	t u
R17.. R17F..	110 110	131 135	58	75 ^{-0.5}	12	9	28 25	20k6	40	4 32	M6	22.5 6
R27.. R27F..	130 110	152 145	75	90 ^{-0.5}	18	9	27 32	25k6	50	3.5 40	M10	28 8
R37.. R37F..	130 110	160 145	75	90 ^{-0.5}	18	9	40 35	25k6	50	3.5 40	M10	28 8
R47.. R47F..	165 135	195 170	90	115 ^{-0.5}	24	13.5	50 42	30k6	60	3.5 50	M10	33 8
R57.. R57F..	165 135	200 190	100	115 ^{-0.5}	24	13.5	60 55	35k6	70	7 56	M12	38 10
R67.. R67F..	195 150	235 210	100	130 ^{-0.5}	30	14	60 60	35k6	70	7 56	M12	38 10
R77.. R77F..	205 170	245 230	115	140 ^{-0.5}	30	17.5	60 60	40k6	80	5 70	M16	43 12
R87.. R87F..	260 215	310 290	140	180 ^{-0.5}	45	17.5	90 75	50k6	100	10 80	M16	53.5 14

size	flange dimension					H	J	L ₁	L ₂	M	N	Q
	P q	l ₃	l ₄	L ₅ l ₆	V w							
R17.. R17F..	120 80j6	40	66	3 8	6.5 100	134	/	207	215	140	0	/
R27.. R27F..	120 80j6	50	81	3 8	6.5 100	147	/	193	199	151	3.4	120
R37.. R37F..	120 80j6	50	81	3 8	6.6 100	151	/	201	207	145	10.1	120
R47.. R47F..	140 95j6	60	90	3 10	9 115	187	/	235	235	178	14	160
R57.. R57F..	160 110j6	70	100	3.5 10	9 130	187	/	257	257	202	11.2	160
R67.. R67F..	200 130j6	70	100	3.5 12	11 165	212	243	280	280	215	20.7	160
R77.. R77F..	250 180j6	80	115	4 15	13.5 215	228	269	300	300	235	15.9	200
R87.. R87F..	300 230j6	100	140	4 16	13.5 265	295	345	372	372	297	12.6	250

size	a b	e f	g	h	j	k	m n	Shaftdimension					H	J	L M	N	Q
								d	l	l ₁ l ₂	s	t u					
R97..	310 250	365 340	160	22 ^{s-0.5}	55	22	100 90	60m6	120	5 110	M20	64 18	368	418	440 348	10.2	300
R107..	370 290	440 400	185	250 ^{-0.5}	65	26	125 110	70m6	140	7.5 125	M20	74.5 20	408	475	495 409	20.4	350
R137..	410 340	490 450	220	315 ⁻¹	70	33	130 110	90m6	170	5 160	M24	95 25	495	562	589 458	25.1	400
R147..	500 380	590 530	260	355 ⁻¹	80	39	150 150	110m6	210	15 180	M24	116 28	565	637	695 540	33.4	450
R167..	580 500	670 660	270	425 ⁻¹	100	39	160 160	120m6	210	5 200	M24	127 32	675	749	790 670	59.9	550

RF17..~RF167..

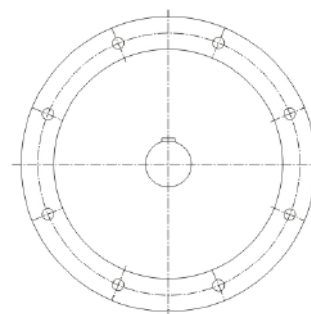
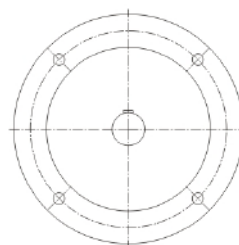
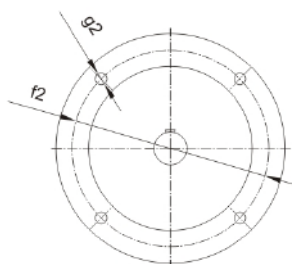
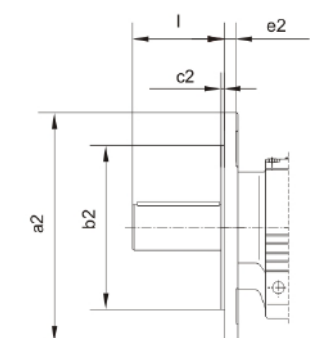
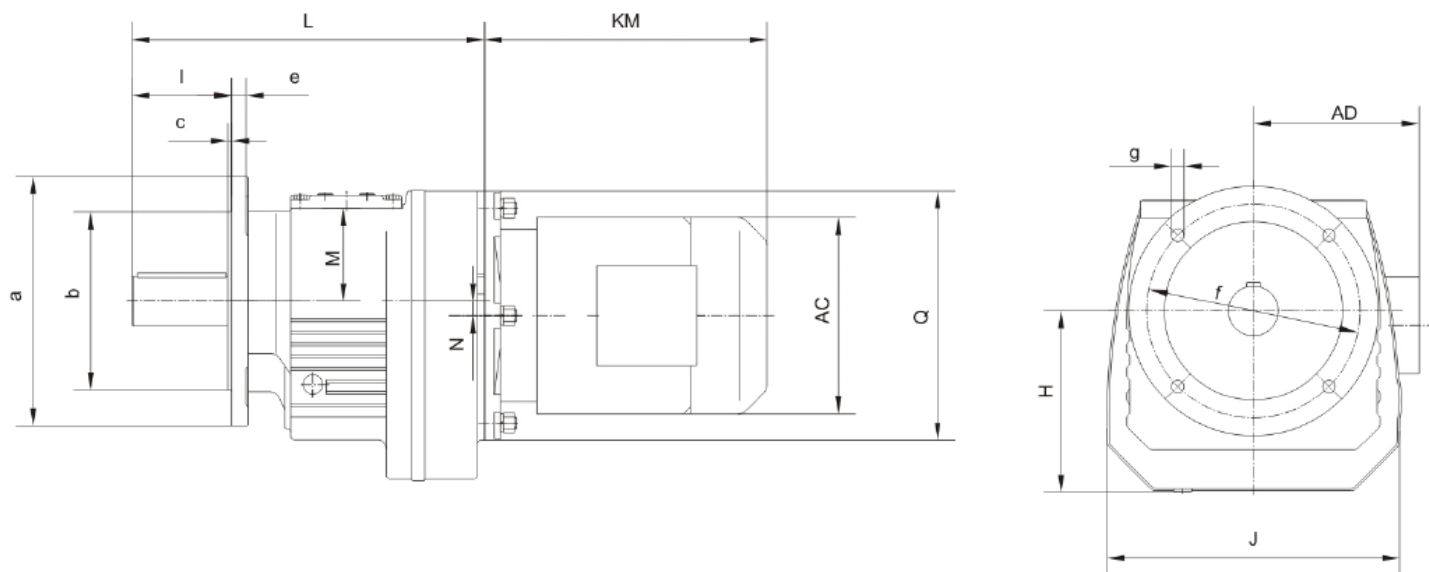
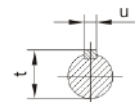
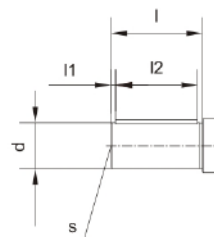
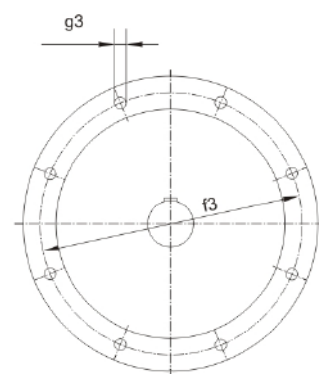
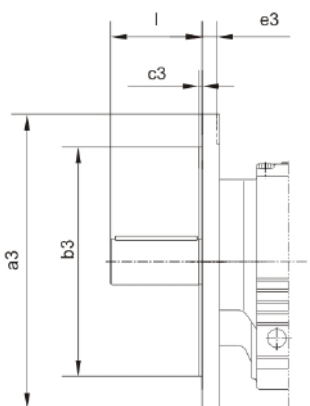


Fig.1

Fig.2

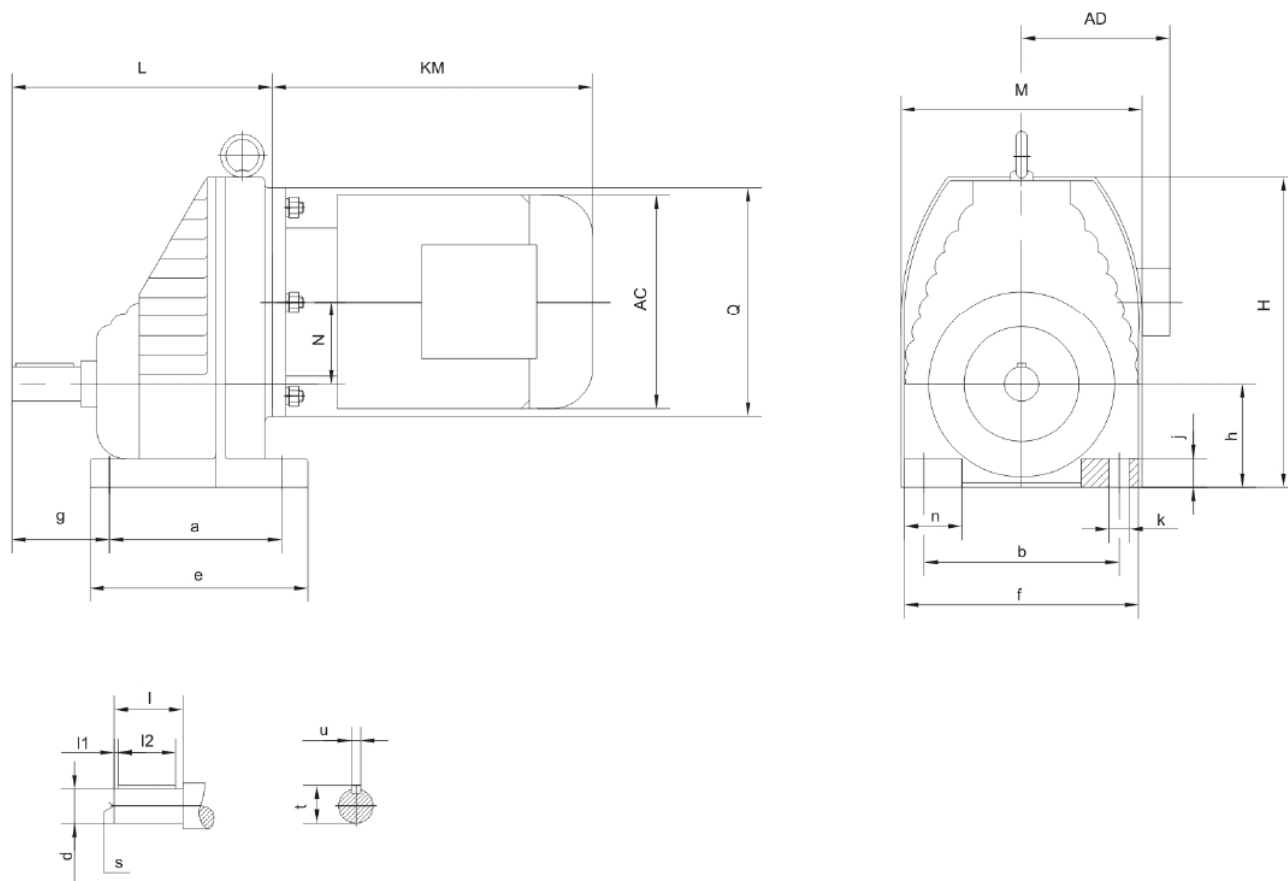


Цилиндрические соосные мотор-редукторы серии R



size	flange dimension	a a ₂ a ₃	b b ₂ b ₃	c c ₂ c ₃	e e ₂ e ₃	f f ₂ f ₃	g g ₂ g ₃	H J K	L M N	Q	Shaftdimension				
											d	l	l ₁ l ₂	s	t u
RF17..	Fig.1	120 140 /	80j6 95j6 /	3 3 /	8 9 /	100 115 /	6.5 8.5 /	76 130 /	215 59 0	/	20k6	40	4 32	M6	22.5 6
RF27..	Fig.1	120 140 160	80j6 95j6 110j6	3 3 3.5	8 9 10	100 115 130	6.5 8.5 8.5	92 142 /	199 57 3.4	120	25k6	50	3.5 40	M10	28 8
RF37..	Fig.1	120 160 200	80j6 110j6 130j6	3 3.5 3.5	8 10 12	100 130 165	6.6 9 11	94 161 /	207 61 10.1	120	25k6	50	3.5 40	M10	28 8
RF47..	Fig.1	140 160 200	95j6 110j6 130j6	3 3.5 3.5	10 10 12	115 130 165	9 9 11	118 178 /	235 72 14	160	30k6	60	3.5 50	M10	33 8
RF57..	Fig.1	160 200 250	110j6 130j6 180j6	3.5 3.5 4	10 12 15	130 165 215	9 11 13.5	121 202 /	257 72 11.2	160	35k6	70	7 56	M12	38 10
RF67..	Fig.1	200 250 /	130j6 180j6 /	3.5 4 /	12 15 /	165 215 /	11 13.5 /	134 215 113	280 82 20.7	160	35k6	70	7 56	M12	38 10
RF77..	Fig.1	250 300 /	180j6 230j6 /	4 4 /	15 18.5 /	215 265 /	13.5 13.5 /	144 235 129	300 88 15.9	200	40k6	80	5 70	M16	43 12
RF87..	Fig.1	300 350 /	230j6 250h6 /	4 5 /	16 18 /	265 300 /	13.5 17.5 /	184 297 165	372 115 12.6	250	50k6	100	10 80	M16	53.5 14
RF97..	Fig.1 Fig.2 /	350 450 /	250h6 350h6 /	5 5 /	18 22 /	300 400 /	17.5 17.5 /	230 348 193	440 144 10.2	300	60m6	120	5 110	M20	64 18
RF107..	Fig.1 Fig.2 /	350 450 /	250h6 350h6 /	5 5 /	20 22 /	300 400 /	17.5 17.5 /	255 409 224	495 158 20.4	350	70m6	140	7.5 125	M20	74.5 20
RF137..	Fig.2	450 550 /	350h6 450h6 /	5 5 /	22 25 /	400 500 /	17.5 17.5 /	320 458 247	589 180 25.1	400	90m6	170	5 160	M24	95 25
RF147..	Fig.2	450 550 /	350h6 450h6 /	5 5 /	22 25 /	400 500 /	17.5 17.5 /	361 540 285	695 210 33.4	450	110m6	210	15 180	M24	116 28
RF147..	Fig.2	450 550 /	350h6 450h6 /	5 5 /	22 25 /	400 500 /	17.5 17.5 /	361 540 285	695 210 33.4	450	110m6	210	15 180	M24	116 28
RF167..	Fig.2	550 660 /	450h6 550h6 /	5 6 /	25 28 /	500 600 /	17.5 22 /	430 670 324	790 250 59.9	550	120m6	210	5 200	M24	127 32

RX57..~RX107..



size	a b	e f	g	h	j	k	n	Shaftdimension					H	J	L M	N	Q
								d	l	l1 l2	s	t u					
RX57..	110 125	137 156	56	63-0.5	18	11	31	20k6	40	3.5 32	M6	22.5 6	202	/	174 162	52	160
RX67..	120 135	150 170	75	80-0.5	20	13.5	35	25k6	50	3.5 40	M10	28 8	226	/	201 176	60	160
RX77..	150 170	190 204	85	90-0.5	25	17.5	50	30k6	60	3.5 50	M10	33 8	271	311	227 210	72	200
RX87..	160 215	206 266	110	100-0.5	30	17.5	60	40k6	80	5 70	M16	43 12	332	372	269 272	93.5	250
RX97..	185 250	240 320	140	112-0.5	35	22	70	50k6	100	10 80	M16	53.5 14	393	440	316 328	116	300
RX107..	210 310	260 360	152	140-0.5	45	22	80	60m6	120	5 110	M20	64 18	459	506	364 370	130	350

RXF57..~RXF107..

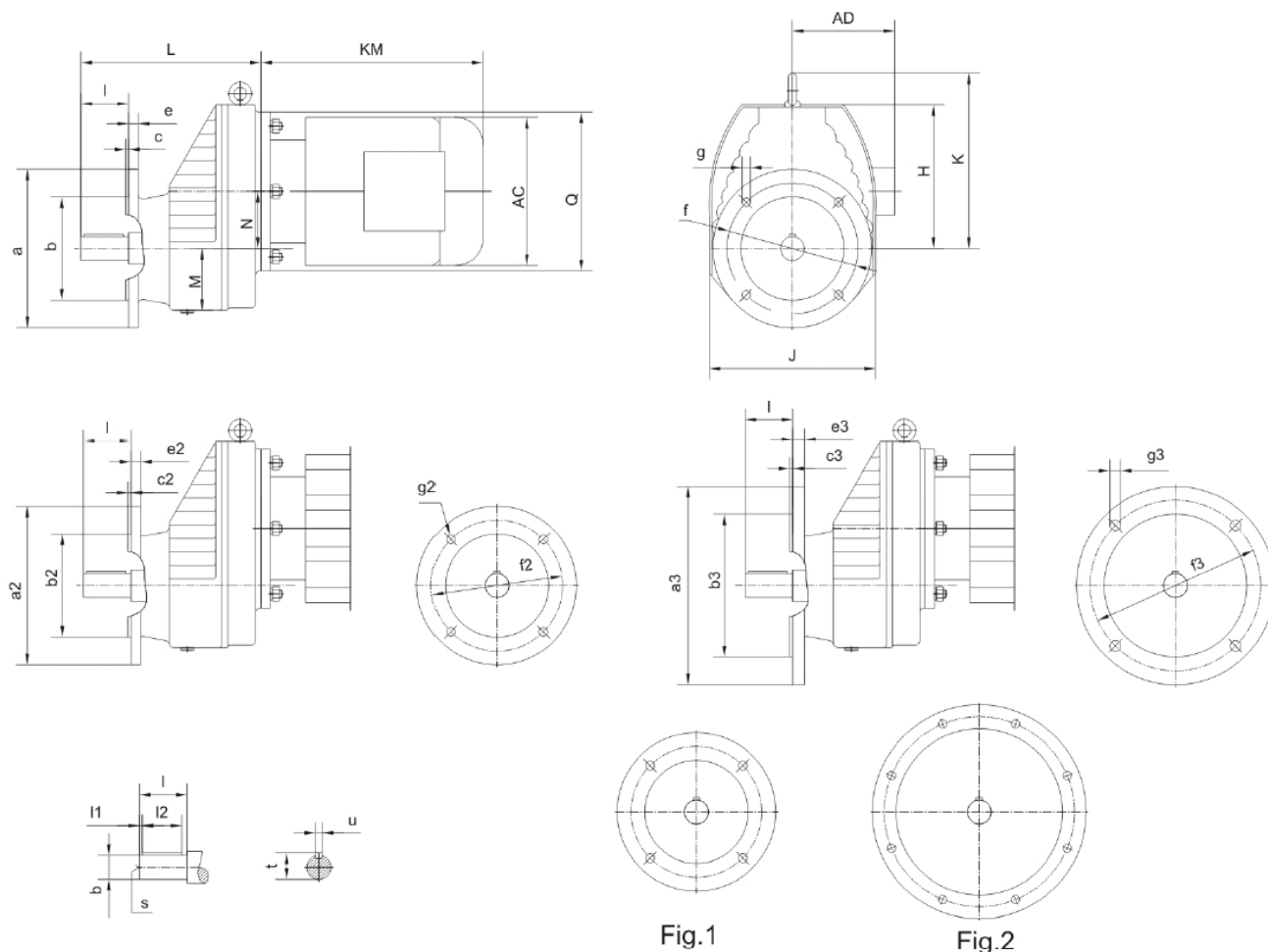


Fig.1

Fig.2

size	flange dimension	a	b	c	e	f	g	H	L	Q	Shaftdimension				
		a ₂ a ₃	b ₂ b ₃	c ₂ c ₃	e ₂ e ₃	f ₂ f ₃	g ₂ g ₃	J K	M N		d	l	l ₁ l ₂	s	t u
RXF57..	fig.1	140	95j6	3	10	115	9	139	174	160	20k6	40	5 32	M6	22.5 6
		160	110j6	3.5	10	130	9	162	62						
		200	130j6	3.5	12	165	11	/	52						
RXF67..	fig.1	160	110j6	3.5	10	130	9	147	201	160	25k6	50	3.5 40	M10	28 8
		200	130j6	3.5	12	165	11	175	70						
		250	180j6	4	15	215	13.5	/	60						
RXF77..	fig.1	200	130j6	3.5	12	165	11	181	227	200	30k6	60	3.5	50	33 8
		250	180j6	4	15	215	13.5	210	78						
		/	/	/	/	/	/	221	72						
RXF87..	fig.1	250	180j6	4	15	215	13.5	232	269	250	40k6	80	5 70	M16	43 12
		300	230j6	4	16	265	13.5	272	98						
		/	/	/	/	/	/	272	93.5						
RXF97..	fig.1	300	230j6	4	16	265	13.5	281	316	300	50k6	100	10 80	M16	53.5 14
		350	250h6	5	18	300	17.5	328	118						
		/	/	/	/	/	/	328	116						
RXF107..	fig.1 fig.2	350	250h6	5	18	300	17.5	319	364	350	60m6	120	5 110	M20	64 18
		450	350h6	5	22	400	17.5	370	135						
		/	/	/	/	/	/	366	130						