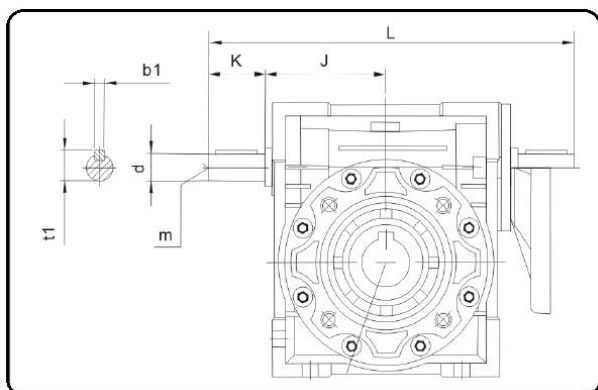
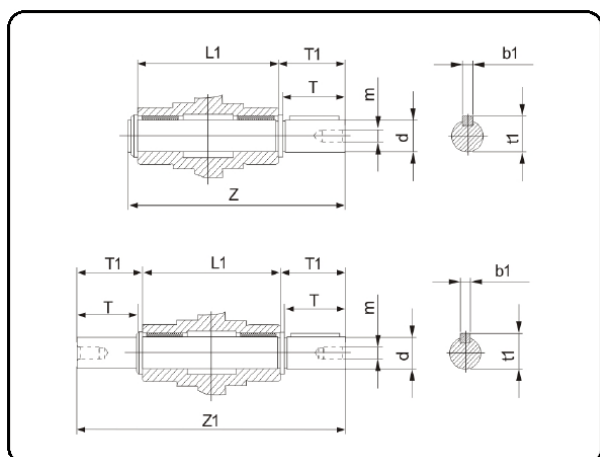


Редуктор RVS – второй выход вала червяка.



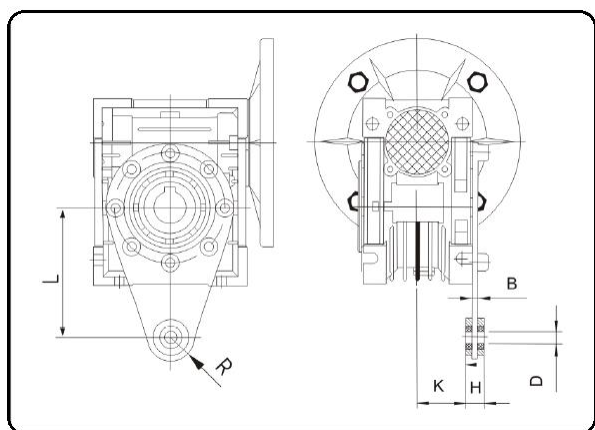
	J	d(j6)	K	L	m	b1	t1
030	45	9	20	136	-	3	10.2
040	53	11	23	165	-	4	12.5
050	63	14	30	198	M6	5	16
063	75	19	40	245	M6	6	21.5
075	90	24	50	295	M8	8	27
090	108	24	50	333	M8	8	27
110	135	28	60	397	M10	8	31
130	155	30	80	477	M10	8	33
150	175	35	80	530	M12	10	38

Выходной вал.



	d(h6)	T	T1	L1	Z	Z1	m	b1	t1
025	11	23	25.5	50	81	101	-	4	12.5
030	14	30	32.5	63	102	128	M6	5	16
040	18	40	43	78	128	164	M6	6	20.5
050	25	50	53.5	92	153	199	M10	8	28
063	25	50	53.5	112	173	219	M10	8	28
075	28	60	63.5	120	192	247	M10	8	31
090	35	80	84.5	140	234	309	M12	10	38
110	42	80	84.5	155	249	324	M16	12	45
130	45	80	85	170	265	340	M16	14	48.5
150	50	82	87	200	297	374	M16	14	53.5

Реактивная штанга.



	L	H	K	D	R	B
025	70	14	17.5	8	15	4
030	85	14	24	8	15	4
040	100	14	31.5	10	18	4
050	100	14	38.5	10	18	4
063	150	14	49	10	18	6
075	200	25	47.5	20	30	6
090	200	25	57.5	20	30	6
110	250	30	62	25	35	6
130	250	30	69	25	35	6
150	250	30	84	25	35	6