



Motoriduttori brushless CC pendolari
Brushless DC helical parallel gearmotors





Indice	Index	Pag. Page
Caratteristiche tecniche	<i>Technical features</i>	D2
Designazione	<i>Classification</i>	D3
Simbologia	<i>Symbols</i>	D3
Lubrificazione e temperatura	<i>Lubrication and temperature</i>	D3
Carichi radiali	<i>Radial loads</i>	D4
FT105 con motore brushless BLS022.240	<i>FT105 with BLS022.240 brushless motor</i>	D5
FT105 con motore brushless BLS043.240	<i>FT105 with BLS043.240 brushless motor</i>	D6
FT146 con motore brushless BLS043.240	<i>FT146 with BLS043.240 brushless motor</i>	D7
FT146 con motore brushless BL070.240 / BL070.480 / BL070.48B	<i>FT146 with BL070.240 / BL070.480 / BL070.48B brushless motor</i>	D8
FT146 con motore brushless BL140.480	<i>FT146 with BL140.480 brushless motor</i>	D9
FT196 con motore brushless BL210.480 / BL210.48E	<i>FT196 with BL210.480 / BL210.48E brushless motor</i>	D10
Dati tecnici	<i>Technical data</i>	D11
Dimensioni FT con flange motore AS	<i>FT dimensions with motor flanges AS</i>	D12

Questa sezione annulla e sostituisce ogni precedente edizione o revisione. Qualora questa sezione non Vi sia giunta in distribuzione controllata, l'aggiornamento dei dati ivi contenuto non è assicurato. **In tal caso la versione più aggiornata è disponibile sul nostro sito internet www.transtecno.com**

This section replaces any previous edition and revision. If you obtained this catalogue other than through controlled distribution channels, the most up to date content is not guaranteed. In this case the latest version is available on our web site www.transtecno.com



Caratteristiche tecniche

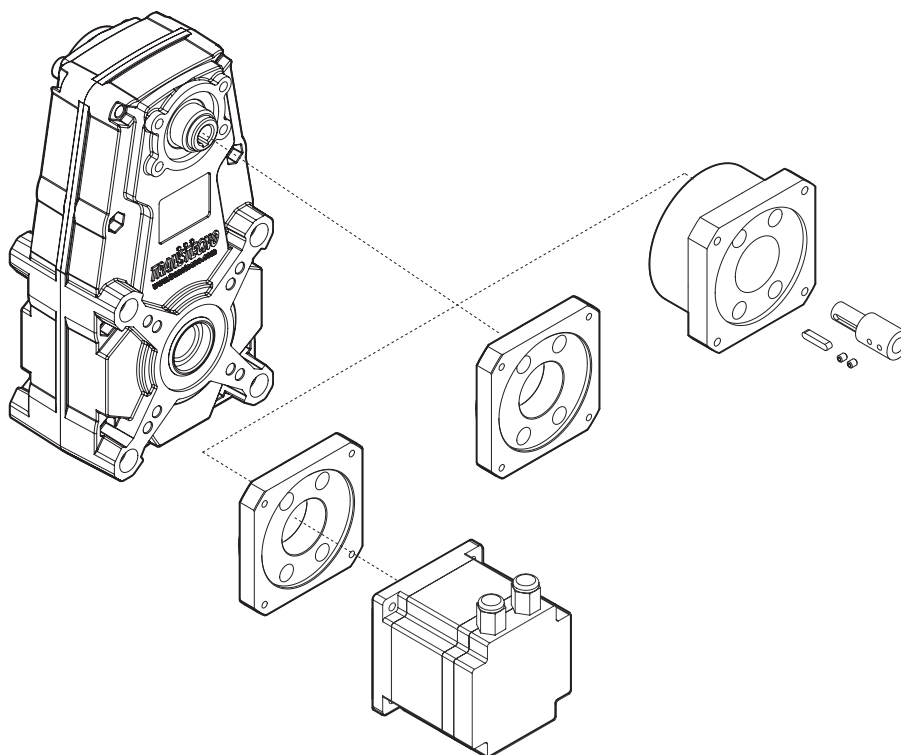
Technical features

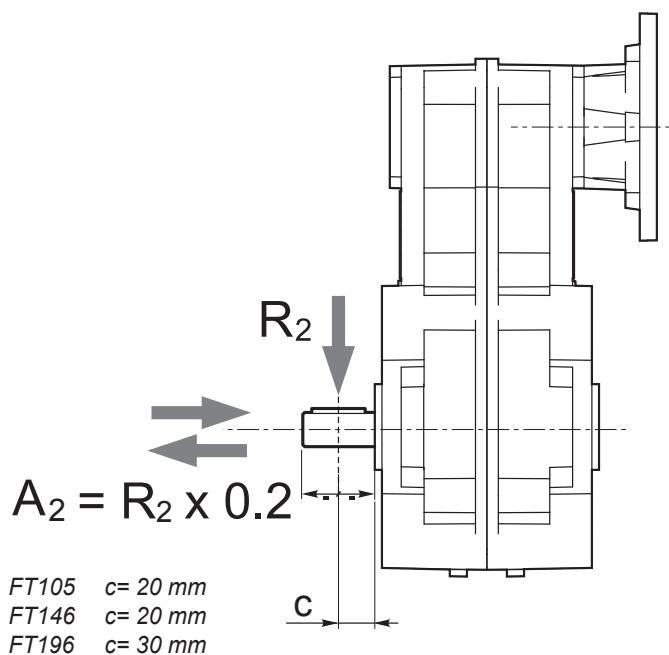
Le caratteristiche principali dei motoriduttori brushless CC pendolari della serie BLFT sono:

- Alimentazione in bassa tensione 24/36/48 Vcc
- Motore BLDC con grado di protezione IP55
- Coppie motori disponibili da 0.22 Nm a 2.1 Nm
- Lubrificazione permanente con olio sintetico
- Carcassa in pressofusione di alluminio
- Ingranaggi cilindrici a denti elicoidali, induriti e rettificati
- Disponibili anche nella versione con solo riduttore, sia con flangia di entrata standard che con flangia e manicotto dedicati

The main features of BLFT brushless DC helical parallel gearmotors range are:

- Low voltage power supply 24/36/48 Vdc
- BLDC motor in IP55 protection standard
- Motor torque ratings available from 0.22 Nm up to 2.1 Nm
- Permanent synthetic oil long life lubrication
- Die-cast aluminium housing
- Ground-hardened helical gears
- Gearbox only version also available, with either standard input flange or customized flange and coupling

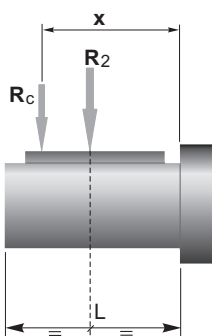




n ₂ [min ⁻¹]	R ₂ [N]		
	FT105	FT146	FT196
200	1000	1600	2250
175	1040	1700	2300
150	1100	1800	2500
125	1160	1900	2700
100	1250	2000	2900
90	1300	2200	3100
80	1400	2400	3300
70	1500	2500	3500
60	1550	2550	3700
50	1600	2600	3850
40	1700	2700	4000
30	1850	2850	4600
20	2000	3000	5500
10	2000	3000	7000
5	2000	3000	7000

Quando il carico radiale risultante non è applicato sulla mezza-
ria dell'albero occorre calcolare quello effettivo con la seguente
formula:

When the resulting radial load is not applied on the centre line
of the shaft it is necessary to calculate the effective load with the
following formula:



	FT105	FT146	FT196
a	82	82,5	132
b	62	62,5	102
R _{2MAX}	2000	3000	7000

$$R_c = \frac{R_2 \cdot a}{(b+x)} \leq R_{2MAX}$$

$$R \leq R_c$$

a, b = valori riportati nella tabella
a, b = values given in the table



FT105 con motore brushless

FT105 with brushless motor

FT105		BLS022.240													
		24V						36V							
		ir	Ns	n _{2MIN} [rpm]			n _{2MAX} [rpm]			n _{1MAX} [rpm]	n _{2MIN} [rpm]			n _{2MAX} [rpm]	
M ₂ [Nm]	sf			M ₂ [Nm]	sf		M ₂ [Nm]	sf			M ₂ [Nm]	sf			
20.6	3	14.6	4.3	10.8	146	4.3	7.3	3000	19.4	4.3	10.8	194	4.3	6.5	4000
33.3		9.0	6.9	8.3	90	6.9	5.7		12.0	6.9	8.3	120	6.9	5.0	
44.4		6.8	9.2	8.1	68	9.2	5.5		9.0	9.2	8.1	90	9.2	4.9	
54.9		5.5	11	6.6	55	11	4.5		7.3	11	6.6	73	11	4.0	
71.8		4.2	15	5.0	42	15	3.4		5.6	15	5.0	56	15	3.0	
77.1		3.9	16	4.7	39	16	3.2		5.2	16	4.7	52	16	2.8	
88.9		3.4	18	4.1	34	18	2.8		4.5	18	4.1	45	18	2.4	
124.8		2.4	26	2.9	24	26	2.0		3.2	26	2.9	32	26	1.7	
181.4		1.7	38	2.0	17	38	1.4		2.2	38	2.0	22	38	1.2	
224.3		1.3	46	1.6	13	46	1.1		1.8	46	1.6	18	46	1.0	
315.1		1.0	65	1.1	10	65	0.8		1.3	65	1.1	13	64	0.7	
368.2		0.8	75	1.0	8.1	72	0.7		1.1	75	1.0	11	64	0.7	
535.0	0.6	105	0.7	5.6	72	0.7	0.7	105	0.7	7.5	64	0.7			
661.8	0.5	105	0.7	4.5	72	0.7	0.6	105	0.7	6.0	64	0.7			
929.4	0.3	105	0.7	3.2	72	0.7	0.4	105	0.7	4.3	64	0.7			

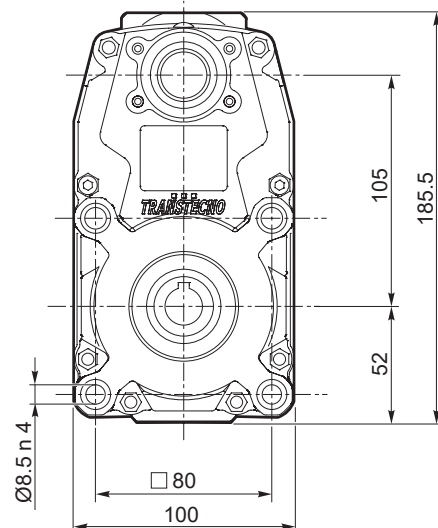
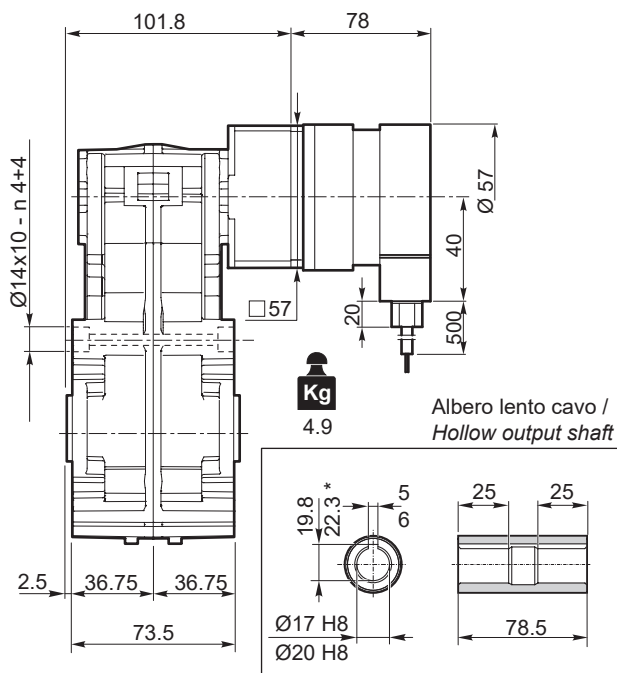
Attenzione: superamento della coppia nominale supportata dal riduttore per servizio S1. Contattare il ns. servizio tecnico
Attention: rated torque withstood by gear reducer for service in S1 is exceeded. Please, contact our technical office.

Tipo Type	Numero di poli Number of poles	Numero di fasi Number of phase	Tensione Rated voltage [V]	Numero di giri Rated speed [rpm]	Coppia nominale Rated torque [Nm]	Potenza nominale Rated power [W]
BLS022.240	4	3	36	4000	0.22	92
			24	3000		70
Tipo Type	Coppia massima Peak torque [Nm]	Corrente nominale Rated current [A]	Resistenza Resistance [ohm]	Induttanza Inductance [mH]	Corrente massima Peak current [A]	Peso Weight [kg]
BLS022.240	0.44	3.7	0.64	3.1	7.4	0.72

Azionamenti Drives

G2

FT105U + BLS022.240



D12

FT105.. AS...



FT105		BLS043.240													
		24V							36V						
		n _{2MIN} [rpm]			n _{2MAX} [rpm]				n _{1MAX} [rpm]	n _{2MIN} [rpm]			n _{2MAX} [rpm]		
ir	Ns	M ₂ [Nm]		sf		M ₂ [Nm]		sf		M ₂ [Nm]		sf			
		20.6	3	14.6	8.3	5.5	146	8.3	3.8	3000	19.4	8.3	5.5	194	8.3
33.3	9.0	13		4.3	90	13	2.9	12.0	13		4.3	120	13	2.6	
44.4	6.8	18		4.2	68	18	2.8	9.0	18		4.2	90	18	2.5	
54.9	5.5	22		3.4	55	22	2.3	7.3	22		3.4	73	22	2.0	
71.8	4.2	29		2.6	42	29	1.7	5.6	29		2.6	56	29	1.5	
77.1	3.9	31		2.4	39	31	1.6	5.2	31		2.4	52	31	1.4	
88.9	3.4	36		2.1	34	36	1.4	4.5	36		2.1	45	36	1.2	
124.8	2.4	50		1.5	24	50	1.0	3.2	50		1.5	32	50	0.9	
181.4	1.7	73		1.0	17	72	0.7	2.2	73		1.0	22	64	0.7	
224.3	1.3	91		0.8	13	72	0.7	1.8	91		0.8	18	64	0.7	
315.1	1.0	105		0.7	10	72	0.7	1.3	105		0.7	13	64	0.7	
368.2	0.8	105		0.7	8.1	72	0.7	1.1	105		0.7	11	64	0.7	
535.0	0.6	105		0.7	5.6	72	0.7	0.7	105		0.7	7.5	64	0.7	
661.8	0.5	105		0.7	4.5	72	0.7	0.6	105		0.7	6.0	64	0.7	
929.4	0.3	105	0.7	3.2	72	0.7	0.4	105	0.7	4.3	64	0.7			

Attenzione: superamento della coppia nominale supportata dal riduttore per servizio S1. Contattare il ns. servizio tecnico
Attention: rated torque withstood by gear reducer for service in S1 is exceeded. Please, contact our technical office.

Tipo Type	Numero di poli Number of poles	Numero di fasi Number of phase	Tensione Rated voltage [V]	Numero di giri Rated speed [rpm]	Coppia nominale Rated torque [Nm]	Potenza nominale Rated power [W]
BLS043.240	4	3	36	4000	0.43	180
			24	3000		130
Tipo Type	Coppia massima Peak torque [Nm]	Corrente nominale Rated current [A]	Resistenza Resistance [ohm]	Induttanza Inductance [mH]	Corrente massima Peak current [A]	Peso Weight [kg]
BLS043.240	0.86	6	0.35	1	12.0	1.25

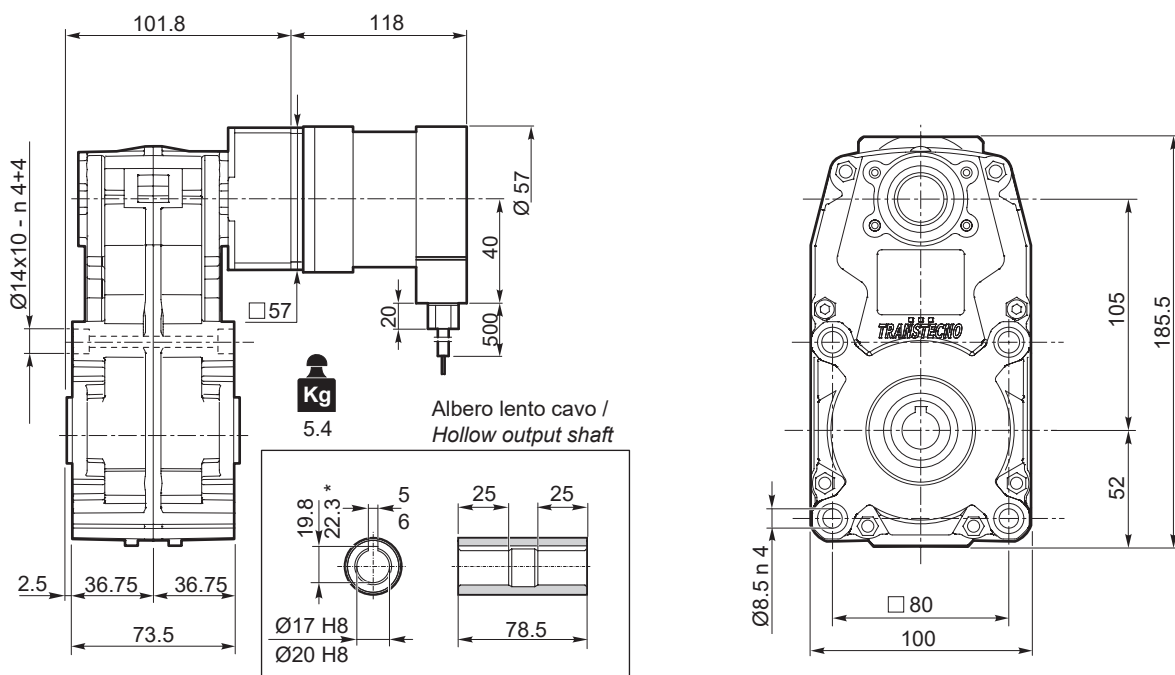
Azionamenti Drives

G2

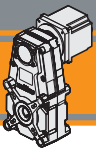
FT105U + BLS043.240

D12

FT105.. AS...



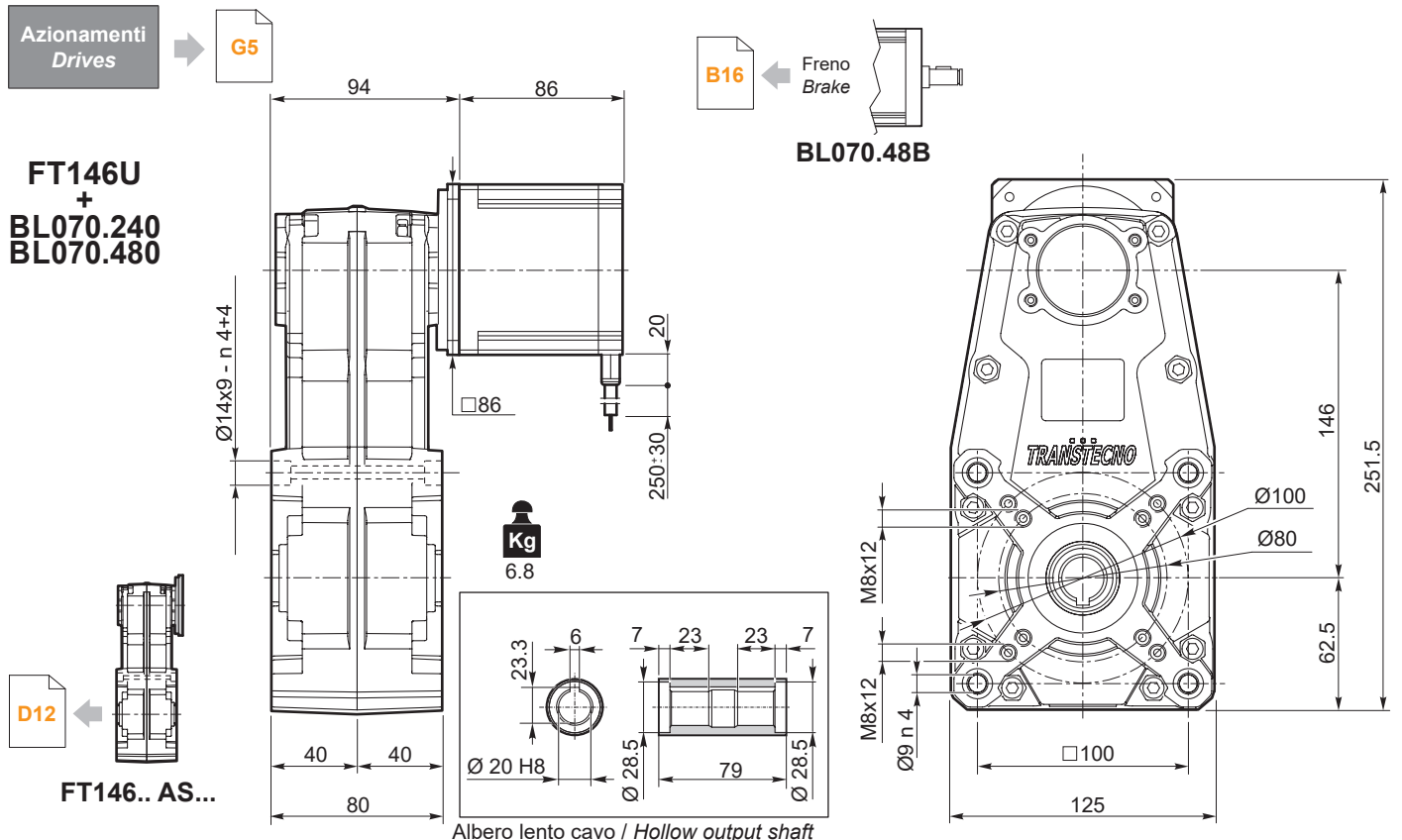
*Sede linguetta ribassata /
*Special keyway



FT146	BL070.240 / BL070.480 / BL070.48B						
	24V / 48V						
	ir	n ₂ MIN [rpm]			n ₂ MAX [rpm]		
M ₂ [Nm]		sf		M ₂ [Nm]	sf		
18.8	16.0	12	7.5	160	12	5.1	3000
22.9	13.1	15	6.1	131	15	4.1	
26.2	11.5	17	5.3	115	17	3.6	
28.3	10.6	19	4.9	106	19	3.4	
35.1	8.6	23	5.0	86	23	3.4	
39.4	7.6	26	4.3	76	26	2.9	
46.4	6.5	31	3.8	65	31	2.6	
52.9	5.7	35	3.3	57	35	2.2	
60.6	4.9	40	3.2	49	40	2.2	
70.0	4.3	46	2.7	43	46	1.9	
74.0	4.1	49	2.6	41	49	1.8	
84.6	3.5	56	2.3	35	56	1.5	
95.6	3.1	63	2.0	31	63	1.4	
113.4	2.6	75	1.7	26	75	1.1	
133.4	2.2	88	1.4	22	88	1.0	
150.2	2.0	99	1.3	20	99	0.9	
160.4	1.9	106	1.3	19	106	0.9	
178.8	1.7	118	1.2	17	118	0.8	
195.9	1.5	129	1.1	15	129	0.7	
223.9	1.3	147	0.9	13	134	0.7	
236.8	1.3	156	0.9	13	134	0.7	
300.1	1.0	170	0.8	10	134	0.7	
397.4	0.8	170	0.8	7.5	134	0.7	

Attenzione: superamento della coppia nominale supportata dal riduttore per servizio S1. Contattare il ns. servizio tecnico
Attention: rated torque withstood by gear reducer for service in S1 is exceeded. Please, contact our technical office.

Tipo Type	Numero di poli Number of poles	Numero di fasi Number of phase	Tensione Rated voltage [V]	Numero di giri Rated speed [rpm]	Coppia nominale Rated torque [Nm]	Potenza nominale Rated power [W]
BL070.240	8	3	24	3000	0.7	220
BL070.480 BL070.48B	8	3	48	3000	0.7	220
Tipo Type	Coppia massima Peak torque [Nm]	Corrente nominale Rated current [A]	Resistenza Resistance [ohm]	Induttanza Inductance [mH]	Corrente massima Peak current [A]	Peso Weight [kg]
BL070.240	2.1	13	0.091	0.23	26	2.1
BL070.480 BL070.48B	1.4	6.5	0.34	1.0	13	2.1





FT146 con motore brushless

FT146 with brushless motor

FT146	BL140.480						n _{1MAX} [rpm]
	48V						
ir	n _{2MIN} [rpm]			n _{2MAX} [rpm]			
	M ₂ [Nm]	sf		M ₂ [Nm]	sf		
18.8	16.0	25	3.7	160	25	2.5	3000
22.9	13.1	30	3.1	131	30	2.1	
26.2	11.5	34	2.7	115	34	1.8	
28.3	10.6	37	2.5	106	37	1.7	
35.1	8.6	46	2.5	86	46	1.7	
39.4	7.6	53	2.2	76	53	1.5	
46.4	6.5	61	1.9	65	61	1.3	
52.9	5.7	70	1.7	57	70	1.1	
60.6	4.9	80	1.6	49	80	1.1	
70.0	4.3	92	1.4	43	92	0.9	
74.0	4.1	97	1.3	41	97	0.9	
84.6	3.5	111	1.1	35	111	0.8	
95.6	3.1	126	1.0	31	122	0.7	
113.4	2.6	149	0.8	26	122	0.7	
133.4	2.2	158	0.8	22	122	0.7	
150.2	2.0	158	0.8	20	122	0.7	
160.4	1.9	170	0.8	19	134	0.7	
178.8	1.7	170	0.8	17	134	0.7	
195.9	1.5	170	0.8	15	134	0.7	
223.9	1.3	170	0.8	13	134	0.7	
236.8	1.3	170	0.8	13	134	0.7	
300.1	1.0	170	0.8	10	134	0.7	
397.4	0.8	170	0.8	7.5	134	0.7	

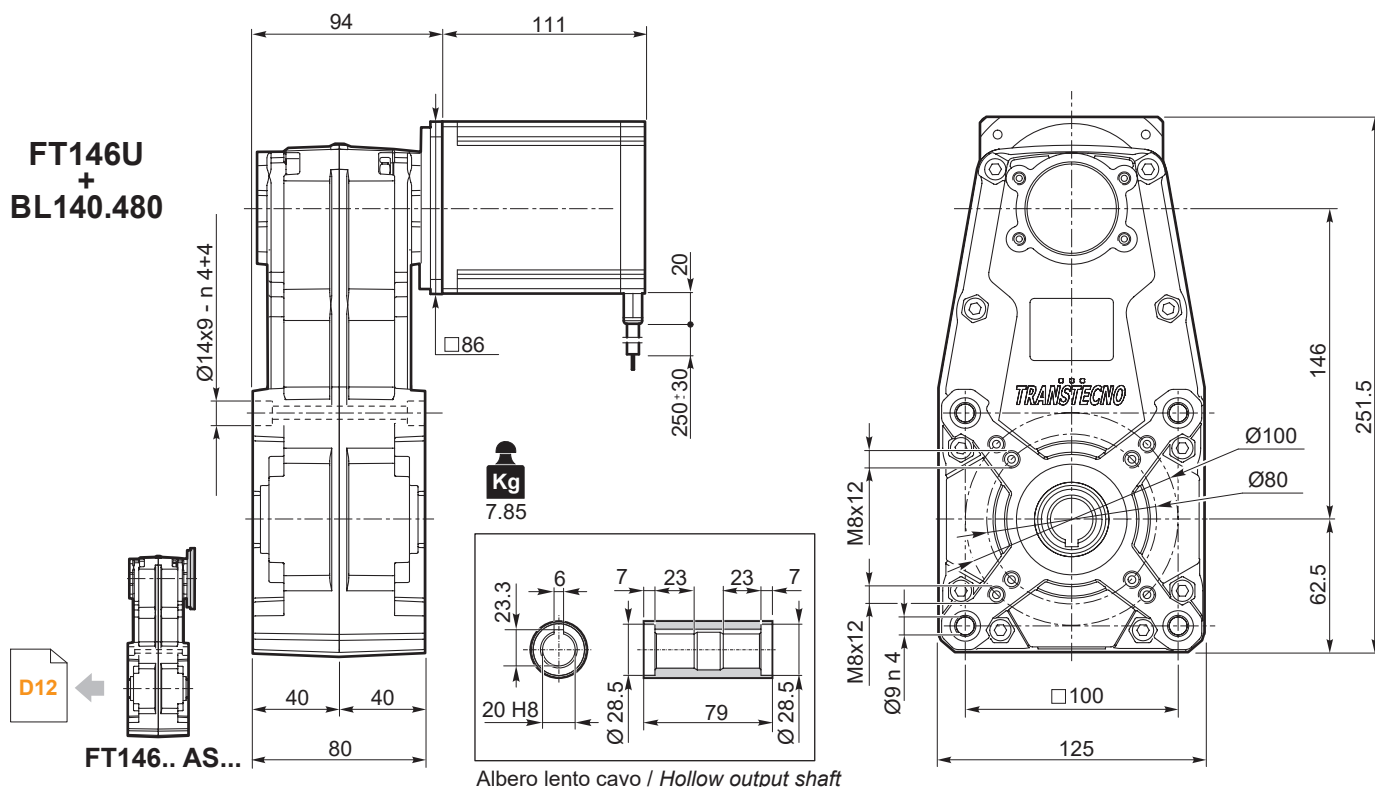
Attenzione: superamento della coppia nominale supportata dal riduttore per servizio S1. Contattare il ns. servizio tecnico
Attention: rated torque withstood by gear reducer for service in S1 is exceeded. Please, contact our technical office.

Tipo Type	Numero di poli Number of poles	Numero di fasi Number of phase	Tensione Rated voltage [V]	Numero di giri Rated speed [rpm]	Coppia nominale Rated torque [Nm]	Potenza nominale Rated power [W]
BL140.480	8	3	48	3000	1.4	440
Tipo Type	Coppia massima Peak torque [Nm]	Corrente nominale Rated current [A]	Resistenza Resistance [ohm]	Induttanza Inductance [mH]	Corrente massima Peak current [A]	Peso Weight [kg]
BL140.480	2.8	13.0	0.16	0.5	26	3.15

Azionamenti
Drives

G8

FT146U
+
BL140.480



Albero lento cavo / Hollow output shaft



FT196	BL210.480 / BL210.48E						
	48V						
ir	n ₂ MIN [rpm]			n ₂ MAX [rpm]			n ₁ MAX [rpm]
	M ₂ [Nm]	sf		M ₂ [Nm]	sf		
20.4	14.7	40	10.0	147	40	6.8	3000
34.8	8.6	69	6.7	86	69	4.5	
42.6	7.0	84	6.2	70	84	4.2	
59.4	5.1	117	4.9	51	117	3.3	
72.7	4.1	143	4.4	41	143	3.0	
92.8	3.2	183	3.5	32	183	2.3	
123.7	2.4	244	2.6	24	244	1.8	
158.0	1.9	312	2.0	19	312	1.4	
201.8	1.5	398	1.6	15	398	1.1	
269.5	1.1	532	1.2	11	532	0.8	

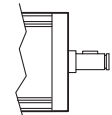
Attenzione: superamento della coppia nominale supportata dal riduttore per servizio S1. Contattare il ns. servizio tecnico
Attention: rated torque withstood by gear reducer for service in S1 is exceeded. Please, contact our technical office.

Tipo Type	Numero di poli Number of poles	Numero di fasi Number of phase	Tensione Rated voltage [V]	Numero di giri Rated speed [rpm]	Coppia nominale Rated torque [Nm]	Potenza nominale Rated power [W]
BL210.480 BL210.48E	8	3	48	3000	2.1	660
Tipo Type	Coppia massima Peak torque [Nm]	Corrente nominale Rated current [A]	Resistenza Resistance [ohm]	Induttanza Inductance [mH]	Corrente massima Peak current [A]	Peso Weight [kg]
BL210.480 BL210.48E	4.2	18.7	0.115	0.31	37	4.2

Azionamenti
Drives



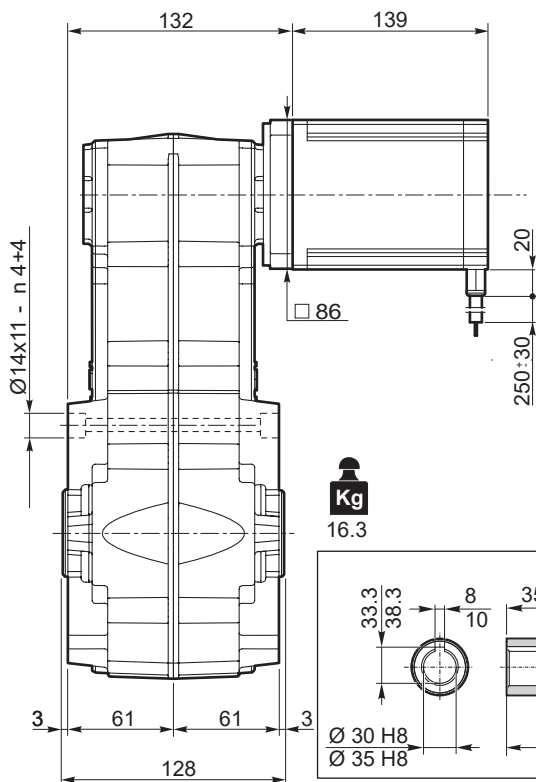
Freno
Brake



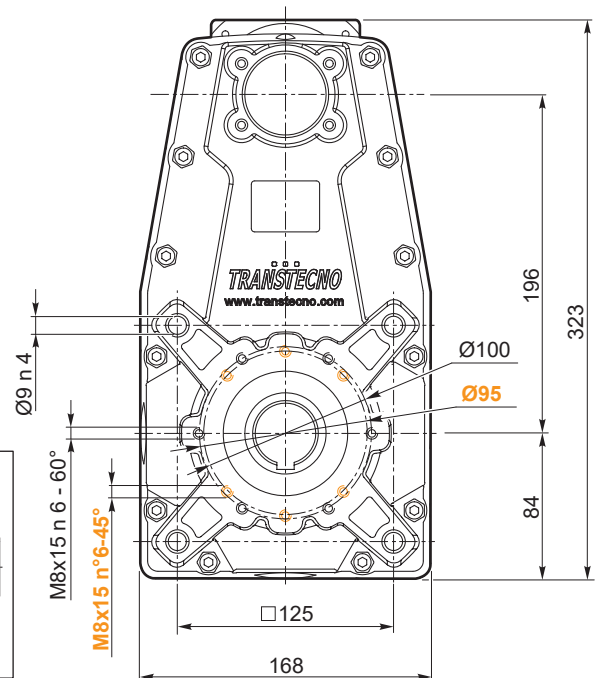
FT196.. AS...

BL210.48E

FT196U
+
BL210.480




Albero lento cavo / Hollow output shaft






Dati tecnici

Technical data

	n_2 [min ⁻¹]	Mn_2 [Nm]	Pn_1 [kW]	i
FT105				
n1 = 1400 rpm	68	40	0.30	20.57
	42	50	0.23	33.32
	32	65	0.23	44.36
	26		0.18	54.87
	20		0.14	71.84
	18		0.13	77.07
	16		0.11	88.87
	11		0.081	124.81
	7.7		0.056	181.35
	6.2		0.045	224.32
4.4	0.032	315.05		
FT105/4	3.8	65	0.028	368.19
	2.6		0.019	534.98
	2.1		0.015	661.76
	1.5		0.011	929.40

	n_2 [min ⁻¹]	Mn_2 [Nm]	Pn_1 [kW]	i
FT105				
n1 = 3000 rpm	146	31	0.51	20.57
	90	39	0.39	33.32
	68	51	0.38	44.36
	55		0.31	54.87
	42		0.24	71.84
	39		0.22	77.07
	34		0.19	88.87
	24		0.14	124.81
	17		0.09	181.35
	13		0.08	224.32
10	0.05	315.05		
FT105/4	8.1	51	0.05	368.19
	5.6		0.03	534.98
	4.5		0.03	661.76
	3.2		0.02	929.40

FT146							
n1 = 1400 rpm	n_2	Mn_2	Pn_1	i			
n1 = 1400 rpm	75	80	0.65	18.75			
	61		0.53	22.89			
	53		0.47	26.17			
	50		0.43	28.26			
	n1 = 1400 rpm	40	100	0.44	35.07		
		35		0.39	39.44		
		30		0.33	46.44		
		26		0.29	52.86		
		n1 = 1400 rpm		23	110	0.28	60.63
				20		0.24	70.00
19	0.23		74.04				
17	0.20		84.63				
15	0.18		95.61				
12	0.15		113.40				
10	0.13		133.45				
9.3	0.11		150.18				
n1 = 1400 rpm	8.7	120	0.11	160.43			
	7.8		0.10	178.83			
	7.1		0.094	195.85			
	6.3		0.082	223.92			
	5.9		0.077	236.83			
	4.7		0.061	300.07			
	3.5		0.046	397.38			

FT146						
n1 = 3000 rpm	n_2	Mn_2	Pn_1	i		
n1 = 3000 rpm	160	62	1.11	18.75		
	131		0.89	22.89		
	115		0.79	26.17		
	106		0.73	28.26		
	n1 = 3000 rpm		86	78	0.74	35.07
76		0.66	39.44			
65		0.56	46.44			
57		0.49	52.86			
n1 = 3000 rpm		49	86		0.47	60.63
		43			0.41	70.00
	41	0.39		74.04		
	35	0.34		84.63		
	31	0.30		95.61		
	26	0.25		113.40		
	22	0.21		133.45		
	20	0.19		150.18		
n1 = 3000 rpm	19	94	0.19	160.43		
	17		0.17	178.83		
	15		0.16	195.85		
	13		0.14	223.92		
	13		0.13	236.83		
	10		0.10	300.07		
	10		0.10	300.07		
	7.5		0.08	397.38		

FT196					
n1 = 1400 rpm	n_2	Mn_2	Pn_1	i	
n1 = 1400 rpm	69	350	2.6	20.41	
	40	400	1.8	34.81	
	33	450	1.6	42.61	
	24	500	1.3	59.36	
	n1 = 1400 rpm	19	550	1.1	72.68
		15		0.92	92.82
		11		0.69	123.95
		8.9		0.51	158.02
		6.9		0.42	201.80
		5.2		0.32	269.47

FT196				
n1 = 3000 rpm	n_2	Mn_2	Pn_1	i
n1 = 3000 rpm	147	273	4.47	20.41
	86	312	3.37	34.81
	70	351	3.06	42.61
	51	390	2.42	59.36
	n1 = 3000 rpm	41	429	1.97
32		1.54		92.82
24		1.16		123.65
19		0.91		158.02
15		0.71		201.80
11		0.53		269.47

BLFT



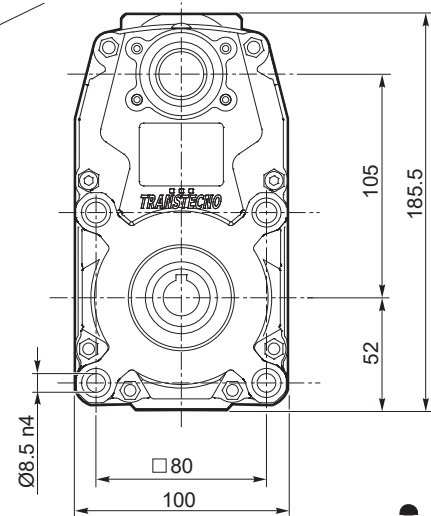
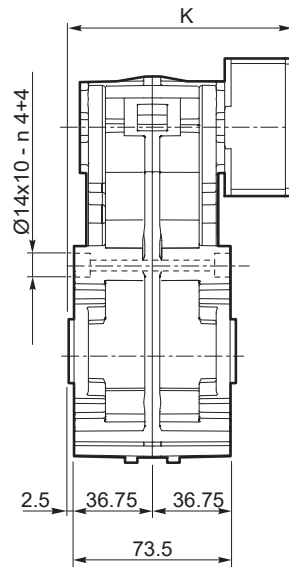
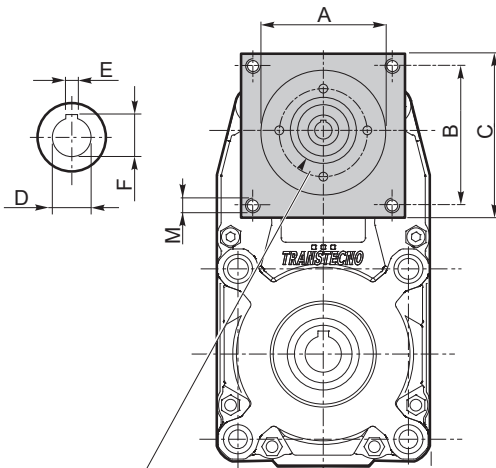
Dimensioni FT con flange motore AS

FT dimensions with motor flanges AS

FT105 - U - AS...

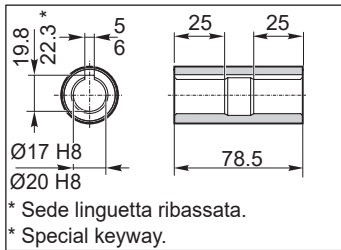
Lo spessore della flangia è variabile in funzione delle diverse lunghezze dell'albero motore.

Flange's thickness may vary depending on motor shaft's length.



Connessione con boccia o giunto in funzione del diametro dell'albero motore.

Connection with sleeve or coupling depending on motor shaft's diameter.



* Sede linguetta ribassata.
* Special keyway.
Albero lento cavo / Hollow output shaft

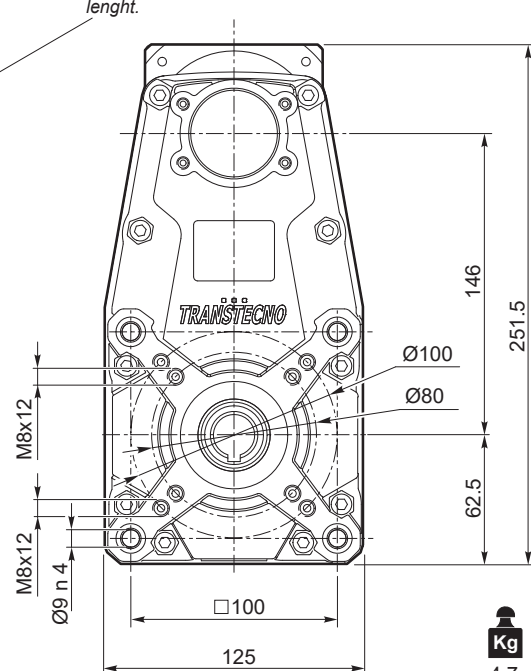
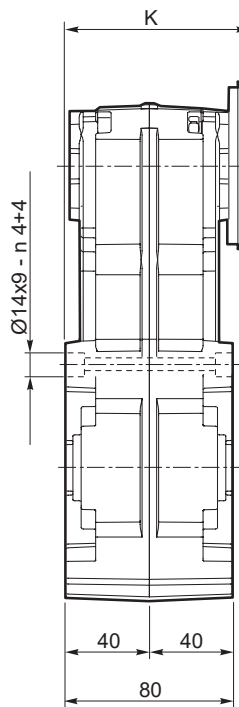
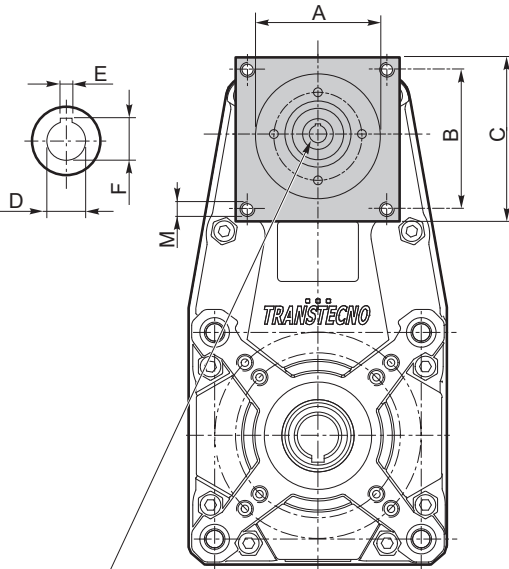
Kg
4.2

Dimensioni / Dimensions								
AS	A	B	C	M	K	D	E	F
AS416	38.1	47.1	56.6	M5	101.8	9	3	10.4
...

FT146 - U - AS...

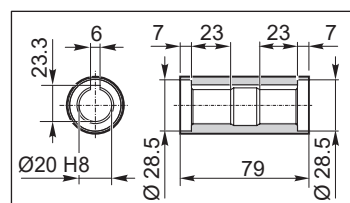
Lo spessore della flangia è variabile in funzione delle diverse lunghezze dell'albero motore.

Flange's thickness may vary depending on motor shaft's length.



Connessione con boccia o giunto in funzione del diametro dell'albero motore.

Connection with sleeve or coupling depending on motor shaft's diameter.



Albero lento cavo / Hollow output shaft

Kg
4.7

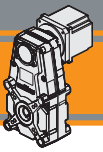
Dimensioni / Dimensions								
AS	A	B	C	M	K	D	E	F
AS392	38.1	47.1	64	M5	94	9	3	10.5
						11	4	12.8
						14	5	16.3
AS384	73	69.6	86	M5	94	9	3	10.5
						11	4	12.8
						14	5	16.3
...



FT

Motori pendolari brushless CC Helipotale Dg da bobine parallel gearmotors

BLFT



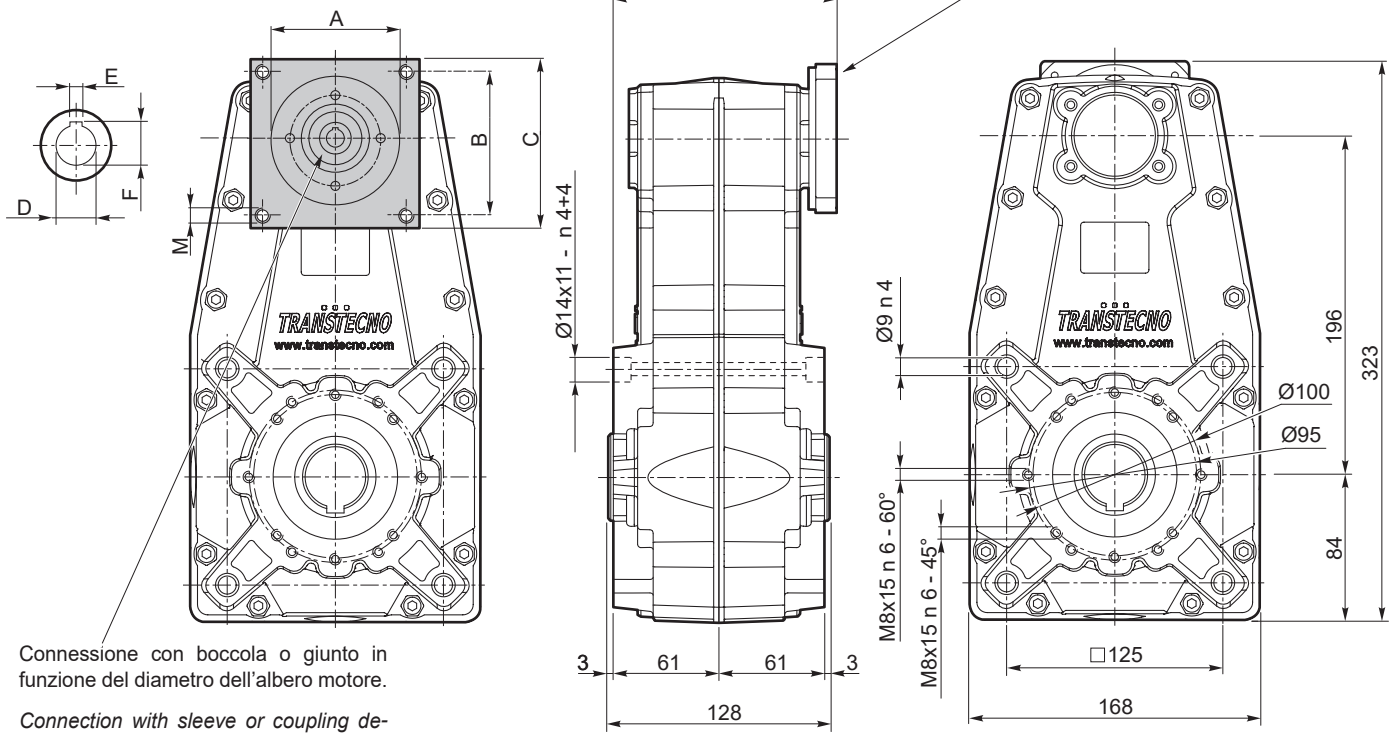
Dimensioni FT con flange motore AS

FT dimensions with motor flanges AS

FT196 - U - AS...

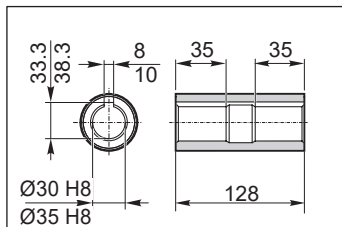
Lo spessore della flangia è variabile in funzione delle diverse lunghezze dell'albero motore.

Flange's thickness may vary depending on motorshaft's length.



Connessione con boccola o giunto in funzione del diametro dell'albero motore.

Connection with sleeve or coupling depending on motorshaft's diameter.



Albero lento cavo / Hollow output shaft

Kg
12.1

Dimensioni / Dimensions

AS	A	B	C	M	K	D	E	F
AS363	73	69.4	86	M5	132	14	5	16.3
						19	6	21.8
						24	8	27.3
...

BLFT

 **TRANSTECNO SRL**
HEADQUARTERS
 Via Caduti di Sabbiano, 11/D-E
 40011 Anzola dell'Emilia (BO)
 ITALY
 T+39 051 64 25 811
 F +39 051 73 49 43
 sales@transtecno.com
 www.transtecno.com


TRANSTECNO®
 the modular gearmotor

CATBLDCALU0920

MEMBER OF INTERPUMP GROUP



 **HANGZHOU TRANSTECNO POWER TRANSMISSIONS CO LTD**
 No.4 Xiuyan Road Fengdu Industry Zone
 Pingyao Town Yuhang District
 Hangzhou City, Zhejiang Province
 311115 - CHINA
 T +86 571 86 92 02 60
 F +86 571 86 92 18 10
 info-china@transtecno.cn
 www.transtecno.cn

 **MA TRANSTECNO S.A.P.I. DE C.V.**
 Av. Mundial # 176, Parque Industrial
 JM Apodaca, Nuevo León,
 C.P. 66600 - MÉXICO
 T +52 8113340920
 info@transtecno.com.mx
 www.transtecno.com.mx

 **TRANSTECNO IBÉRICA**
THE MODULAR GEARMOTOR, S.A.
 C/Enginy. 2 Nave 6
 08850 Gavà (Barcelona) - SPAIN
 T +34 931 598 950
 info@transtecno.es
 www.transtecno.es

 **TRANSTECNO B.V.**
 De Stuwdam,43
 3815 KM Amersfoort - NETHERLANDS
 T +31(0) 33 45 19 505
 F +31(0) 33 45 19 506
 info@transtecno.nl
 www.transtecno.nl

 **TRANSTECNO AANDRIJFTECHNIEK B.V.**
 De Stuwdam 43
 3815 KM Amersfoort - NETHERLANDS
 T +31 (0) 33 20 4 7 006
 info@transtecnoaandrijftechnik.nl
 www.transtecnoaandrijftechnik.nl

 **TRANSTECNO USA**
 8 Creek Parkway,
 Boothwyn PA 19061-8136
 UNITED STATES
 T + 1 (610) 4970154
 F +1 (610) 497 6085

14561 Frylands Blvd SE
 Monroe, WA 98272 - UNITED STATES
 T +1 360-863-1300
 F +1 360-863-1303
 usaoffice@transtecno.com
 www.transtecno.com

 **TRANSTECNO CANADA**
 51 B Caldari Road Unit 10
 Vaughan, ON L4K 4G3 - CANADA
 T +1 905 761 0762
 F +1 905 761 9265
 canadaoffice@transtecno.com
 www.transtecno.com

 **TRANSTECNO CHILE-PERU**
 Av. Los Libertadores 41
 Parque Industrial - Los Libertadores 16.500
 Santiago, Colina - CHILE
 T +56 2 29633870
 Carretera Panamericana Sur KM 29.5,
 Interior I-3, Z.I. Lurin - PERU
 T +51 1 3546259 / + 51 1 3434231
 chileoffice@transtecno.com
 www.transtecno.com

 **SALES OFFICE BRAZIL**
 Rua Dr. Freire Alemão 155 / 402 - CEP. 90450-060
 Auxiliadora Porto Alegre RS - BRAZIL
 T +55 51 3251 5447
 F +55 51 3251 5447
 M +55 51 811 45 962
 braziloffice@transtecno.com
 www.transtecno.com.br

 **SALES OFFICE OCEANIA**
 44 Northview drive, Sunshine west 3020
 Victoria - AUSTRALIA
 T +61 03 9312 4722
 F +61 03 9312 4714
 M +61 0438060997
 oceaniaoffice@transtecno.com
 www.transtecno.com.au

 **SALES OFFICE INDIA**
 Woodbine 2003/04, Everest Road
 Kolshet Road, Thane west Mumbai 400607
 INDIA
 T +91 982 061 46 98
 indiaoffice@transtecno.com
 www.transtecno.com

 **SALES OFFICE SOUTH KOREA**
 410-7. Samrae-eup, Wanju-goon, Chonbuk 55332
 SOUTH KOREA
 T +82 70 8867 8897
 F +82 504 199 2107
 M +82 10 5094 2107
 koreaoffice@transtecno.com
 www.transtecno.com